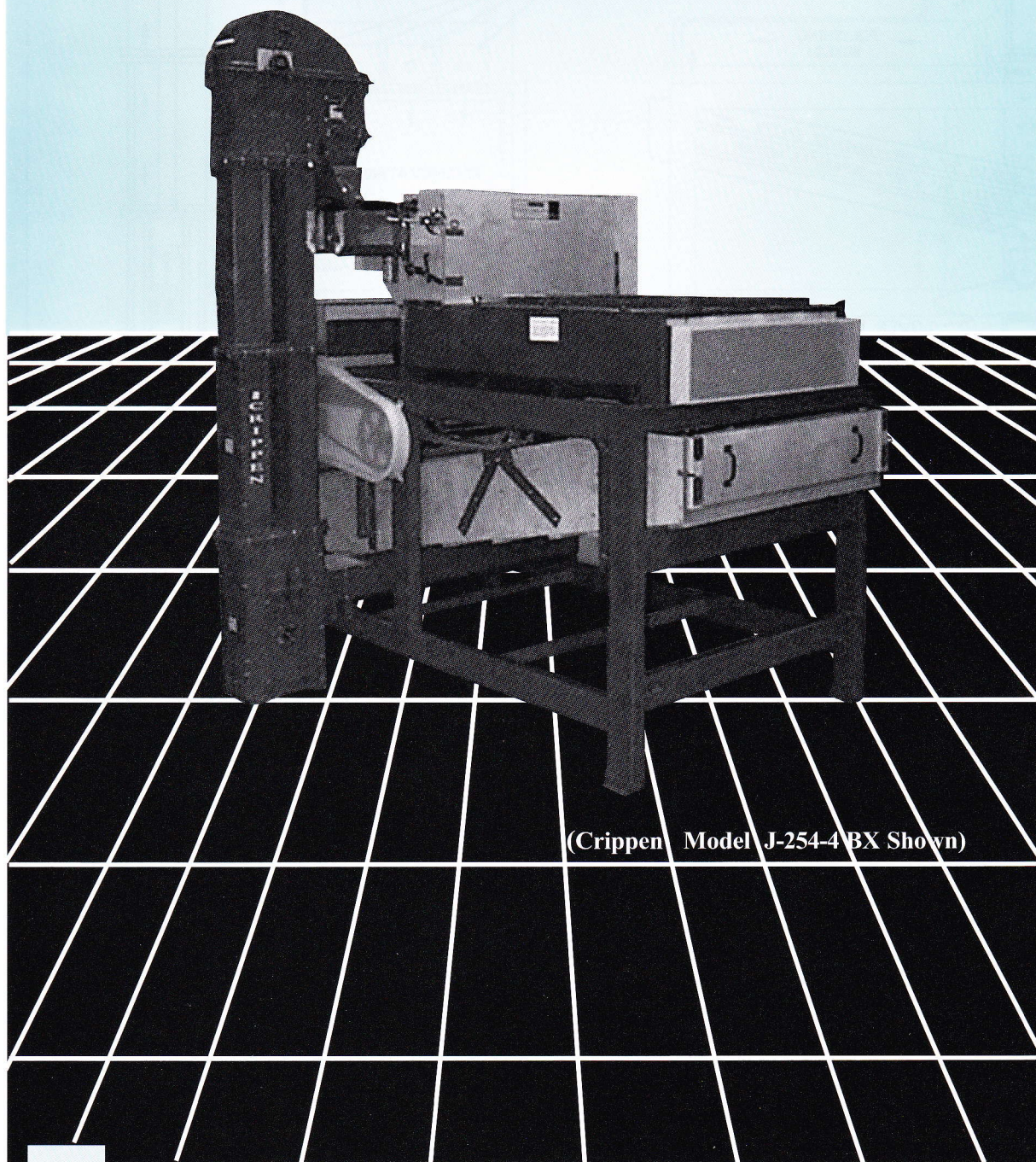


"J" SERIES POLISHERS

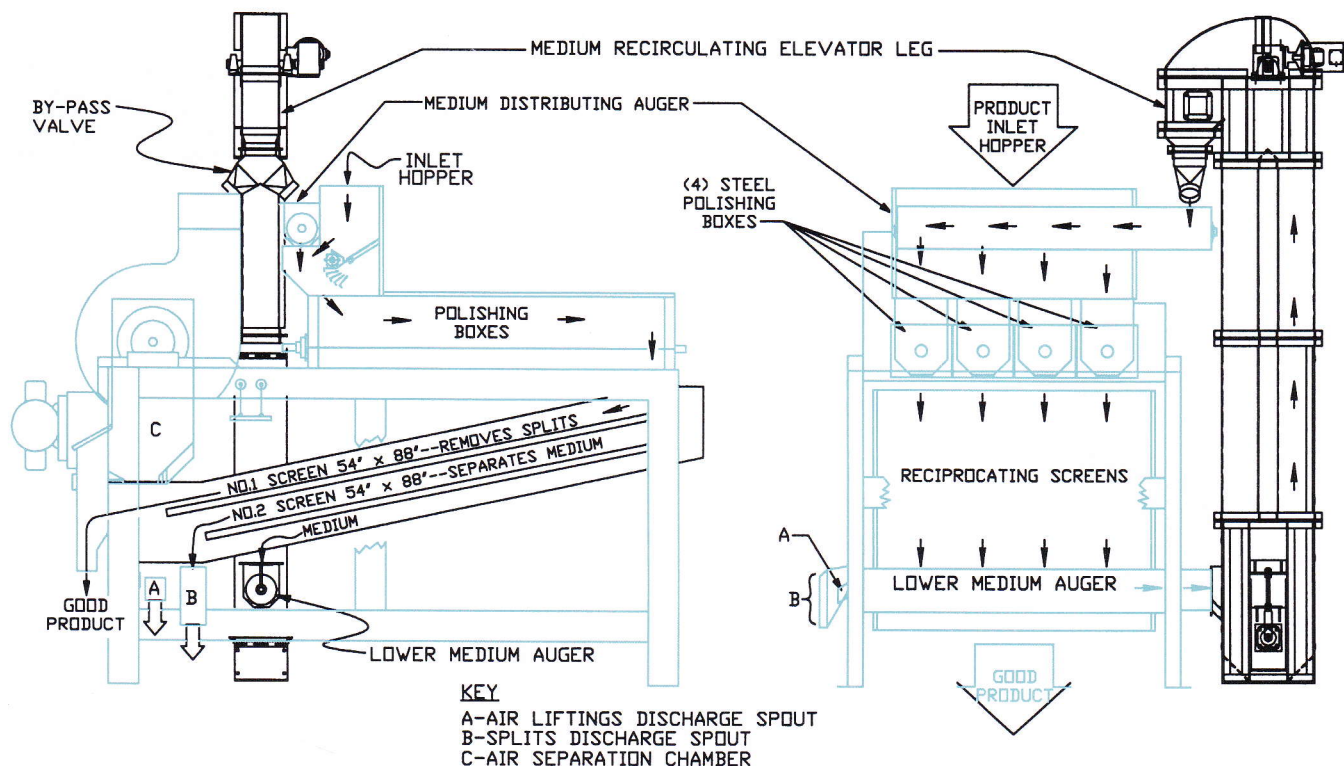


(Crippen Model J-254-4 BX Shown)

FEATURING

- Low maintenance ball tray screen cleaning system
- Standard discharge air separation (4,250 CFM) - J254 only
- U.S. standard components and drives
- Polishing medium recirculating elevator leg with bypass valve
- Screen material to match your products requirements
- Heavy-duty steel mixing boxes
- Laminated hardwood wood components
- Designed and built in the U.S.A.
- Highest quality American workmanship - A Crippen standard
- Screens and replacement parts always in stock at factory for prompt delivery

CRIPPEN POLISHER MODEL "J-254-4BX"



The "J" series is an extremely effective and unique polisher used primarily on edible beans and soybeans where a high degree of polish is desired. It is an inexpensive unit to operate and its gentle polishing action does not crack or split the product.

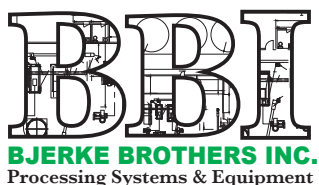
The product is introduced at the hopper, combines with a polishing medium such as corncob grit or sawdust, and then flows into the mixing box(s). The polishing action is provided inside the box(s) where slowly rotating paddles gently work the product back and forth with the medium until discharging out the end of the box(s). Water, vinegar, and oil can be added to the medium to enhance the polishing action. When the polishing medium becomes too dirty to perform satisfactorily, it can be withdrawn by a convenient by-pass valve and replaced as needed.

The polishing medium is separated from the product by a single reciprocating screen on the J-18 and J-36 models and continually recirculated back into the machine. The J-254-4BX has 2 screens to separate the splits and medium from whole beans, and medium from the splits.

MODEL	Average Capacity (edible beans)	Average Capacity (soybeans)	Hopper Inlet Height	Overall Height w/Elevator	Overall Length	Overall Width	Screen Frame
J-18	75-100 BPH	38-50 BPH	70"	108"	90"	48"	18" x 72"
J-36	150-200 BPH	75-100 BPH	80"	156"	90"	68"	36" x 72"
J-254-4BX	300-400 BPH	150-200 BPH	84"	108"	127"	84"	(2) 54" x 88"

MODEL	Main Mixer Shaft Speed	Polisher HP Required	Elevator HP Required	Shipping Weight
J-18	135 RPM	2.0 HP	1.0 HP	1500#
J-36	135 RPM	5.0 HP	1.0 HP	2700#
J-254-4BX	135 RPM	*(3) MOTORS	1.0 HP	5600#

* J-254-4BX POLISHER HAS THREE MOTORS--ONE (1) 5 HP FOR FAN AND SCREEN SHAKE DRIVE, ONE (1) 5HP FOR POLISHING BOXES AND ONE (1) 1/2 HP FOR LOWER COMPOUND AUGER.



P.O. BOX 152
1311 162ND Ave. NE
Buxton, ND 58218
P (701) 847-3125
F (701) 847-2157
www.bjerkebrothersinc.com



UNIT 8 - 851 Lagimodiere Blvd.
Winnipeg, Manitoba
Canada R2J 3K4
P (204) 925-6141
F (204) 925-6144
www.crippennorthlandsuperior.com